

SHIJIAZHUAGN INDIOR SPORTS GOODS CO., LTD

INDIOR FLOOR

GYM & FITNESS RUBBER FLOOR

sales7@indiorfloor.com

M.P/Whatsapp/wechat:

86-15032685165

INDIOR FLOOR



GYM & FITNESS PVC FLOOR

sales7@indiorfloor.com

[M.P/whatsapp/wechat:86-15032685165](https://www.whatsapp.com/channel/002998615032685165)

Product

Gym Rubber Floor



Rubber Floor Used in Gym

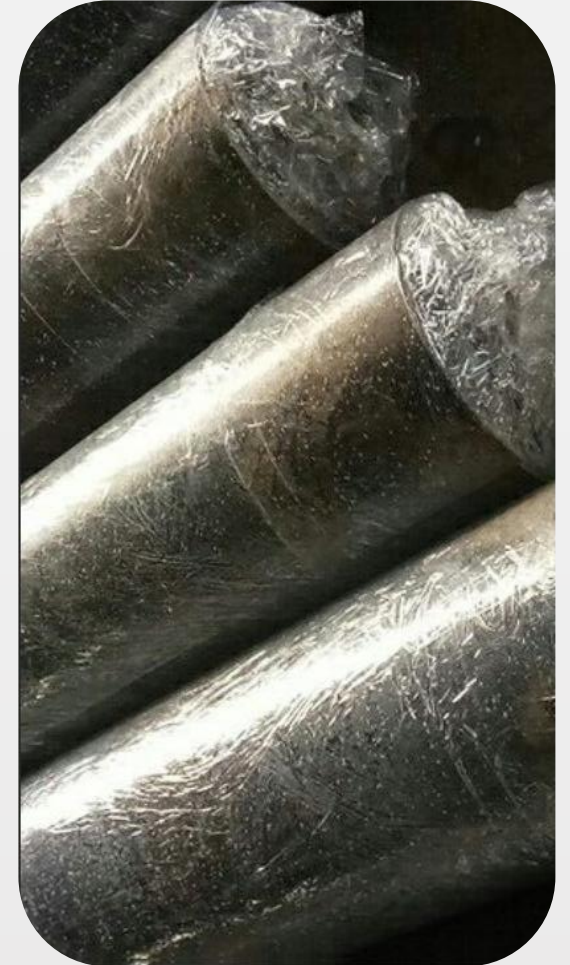
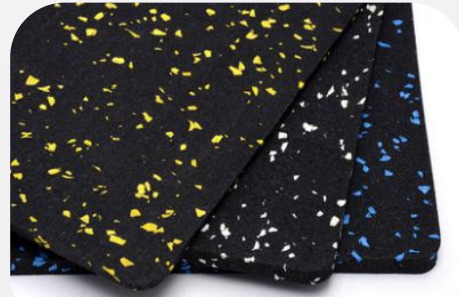


Fitness Areas

1. Rubber Roll



Size: 1.25mX10m or as you request
Thickness: 3.0mm-15mm
Colour: Pure colour / 15% EPDM or as you request
Feature: Anti-slip, Waterproof, Durable
Application: Gym, Fitness, Garage,



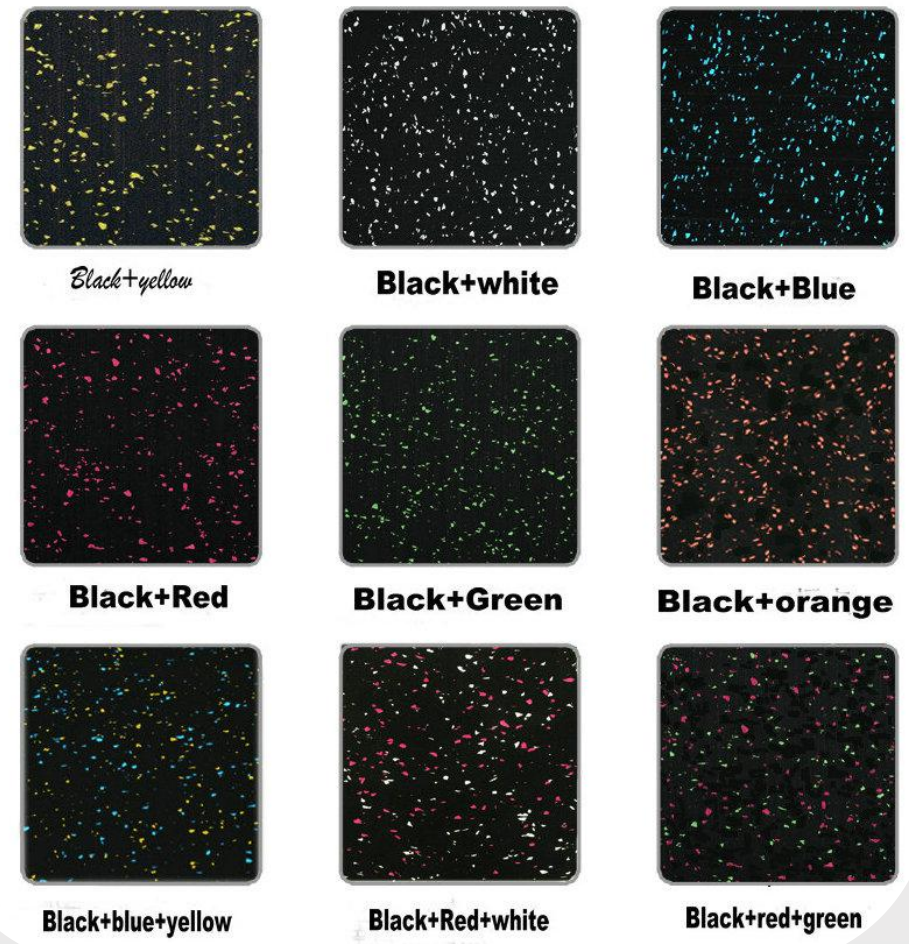
INDIOR FLOOR

Rubber Roll Details:



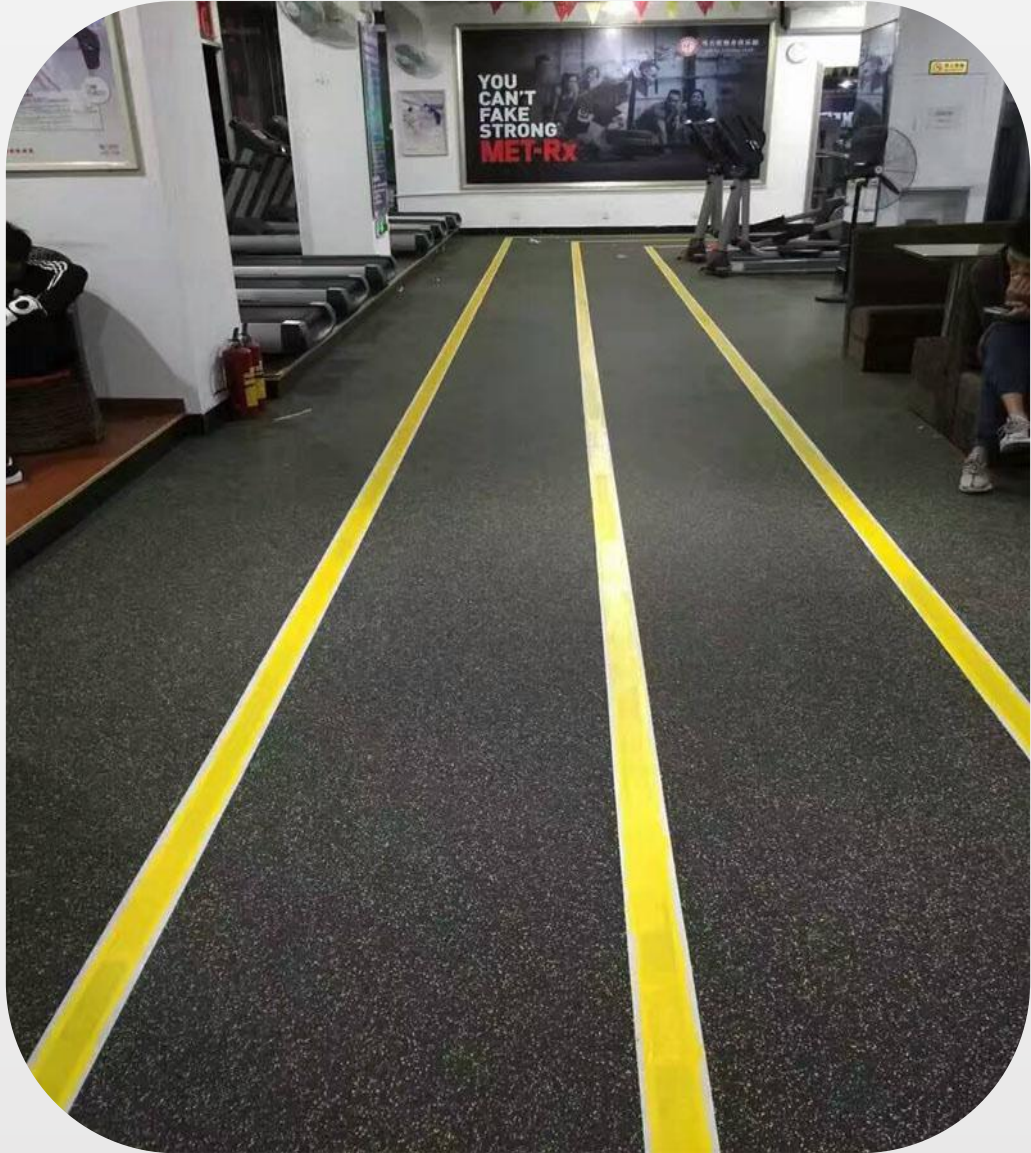
Rubber Roll Color Choose

COLOR DISPLAY



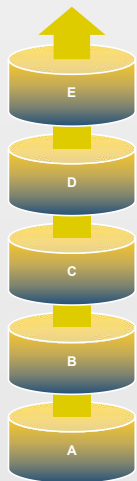
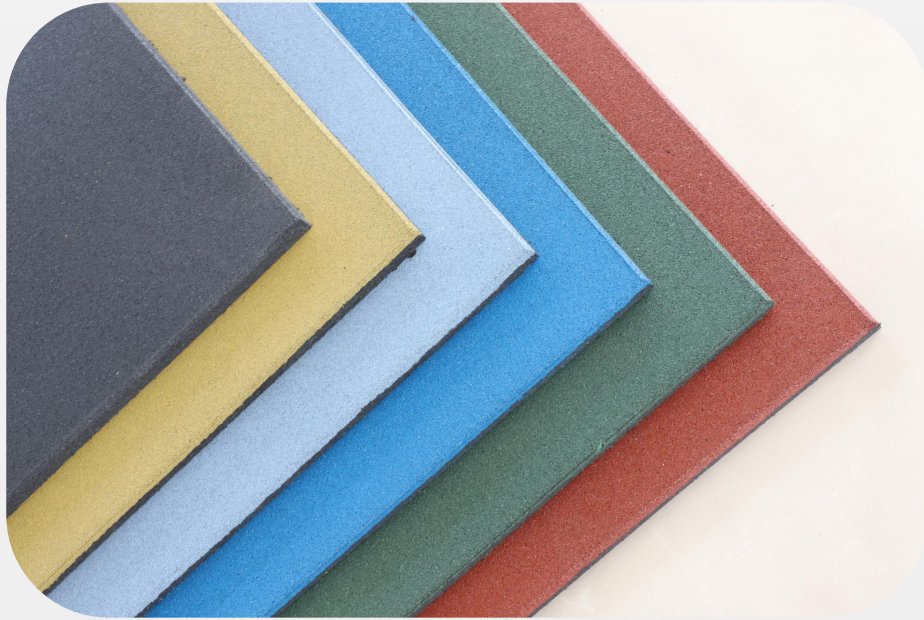
INDIOR FLOOR

Rubber Roll Used In Gym Heavy Equipment area, Spinning area , aerobic exercise etc:



INDIOR FLOOR

2.Rubber Tile-Pure Colour Top Surface



Colour: Blue,Green, Red, Grey, Black, Yellow

Thickness: 15-50mm, 15-20mm(with interlock)

Interlock: With/Without

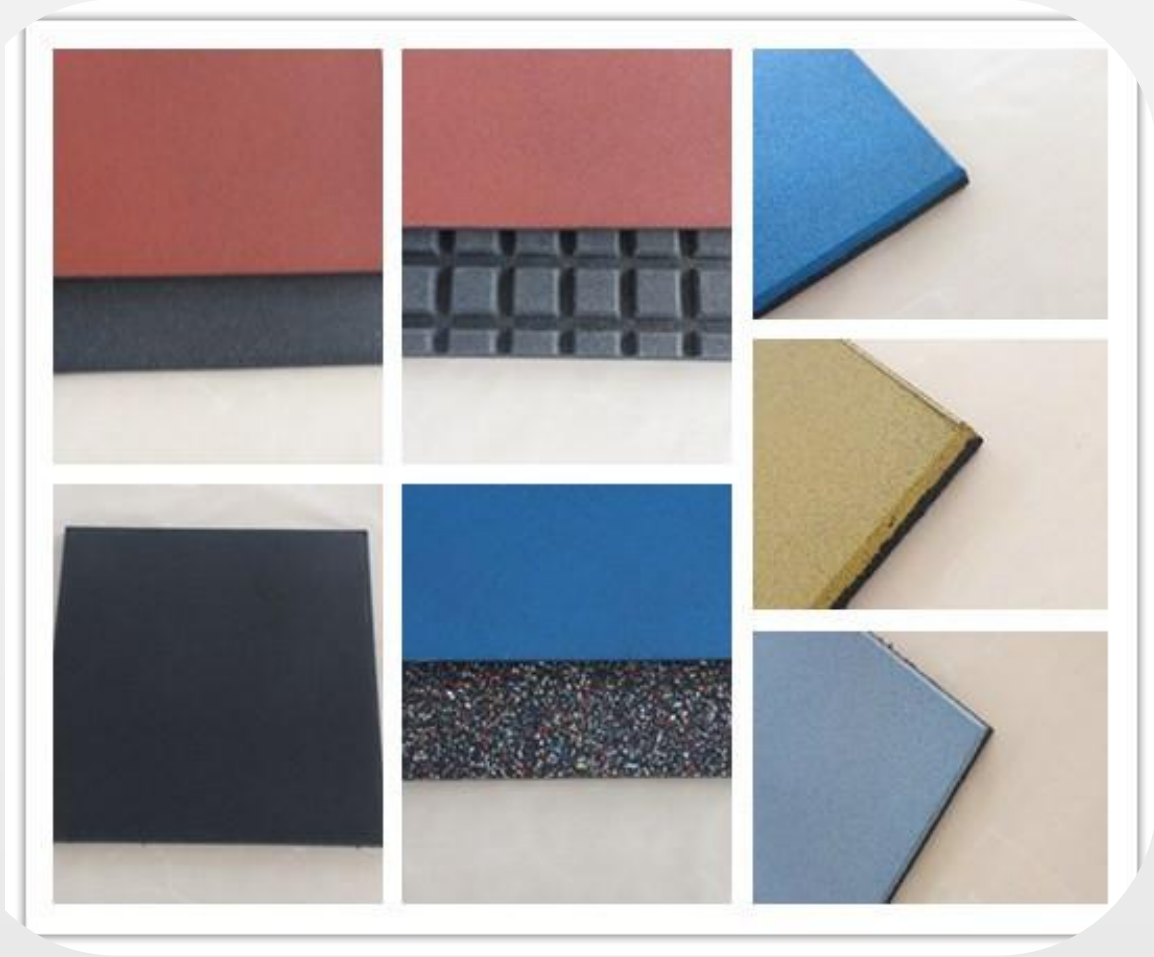
Size:500mmX500mm, 1mX1m

Material:Recycling tyres rubber



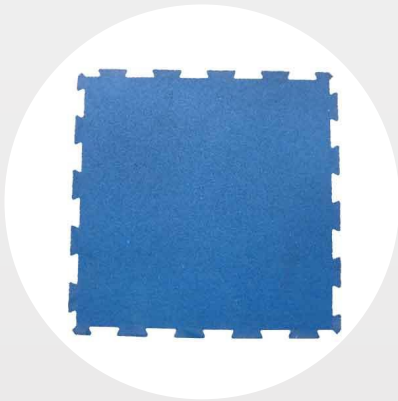
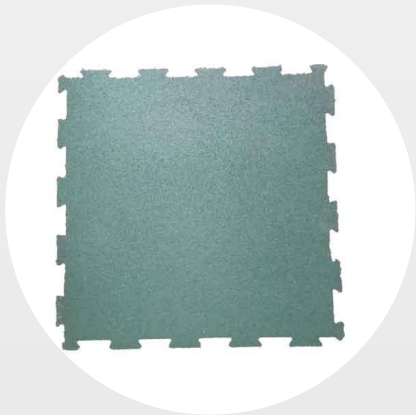
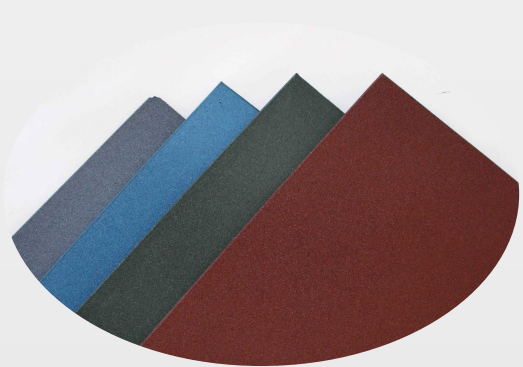
INDIOR FLOOR

Details

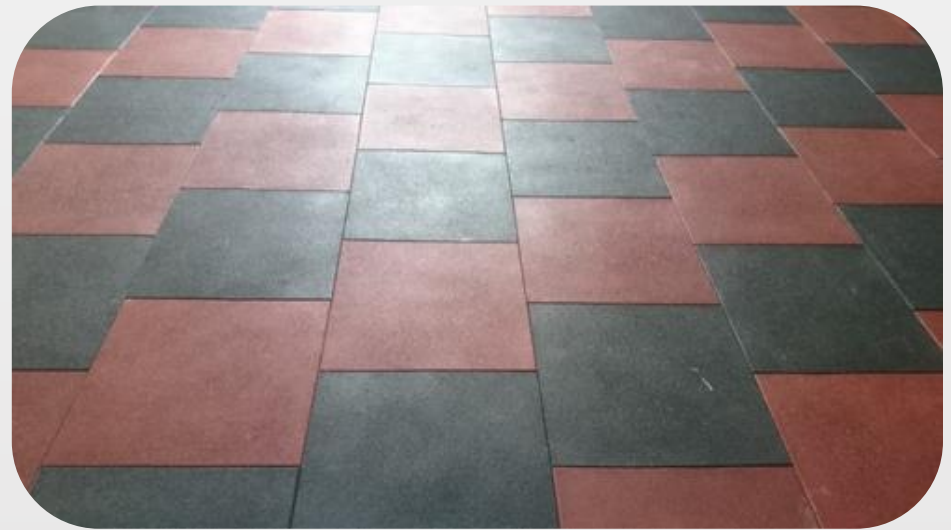


INDIOR FLOOR

Colour Display

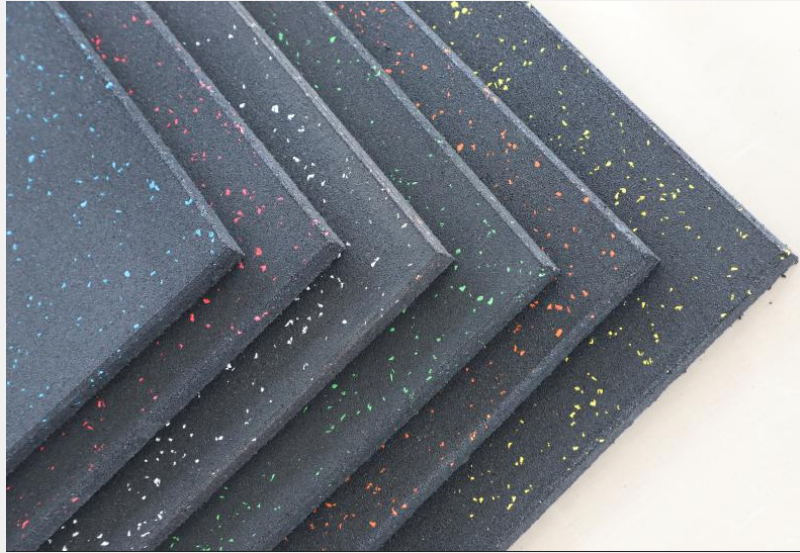


Rubber tile used in gym spinning area



INDIOR FLOOR

3. Rubber Tile-Black Base + 10% EPDM on Top Surface



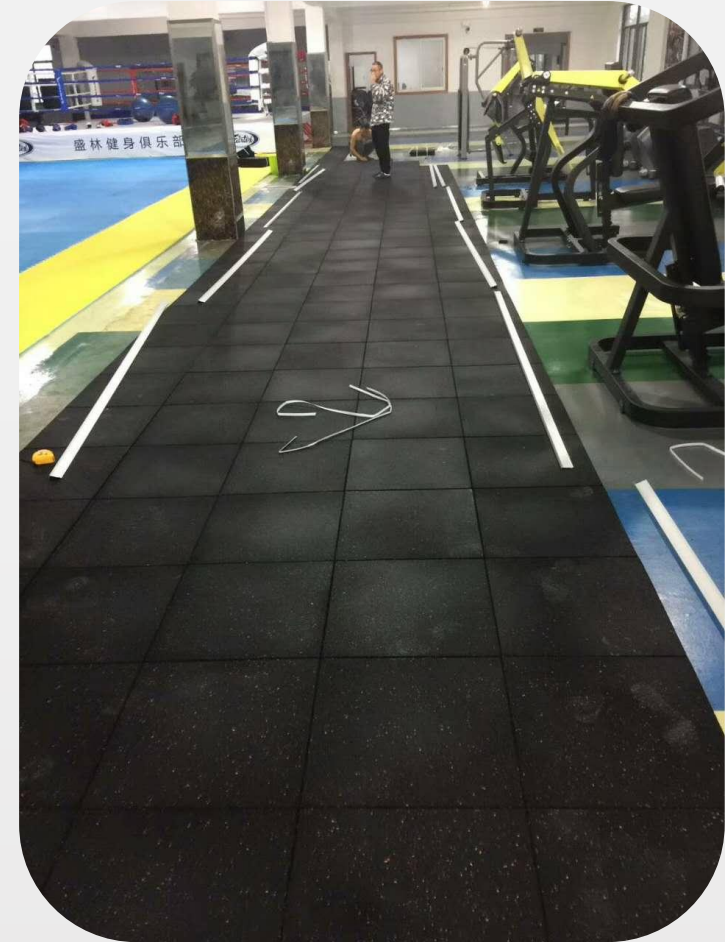
Material: Recycling tyres rubber

Size: 500mmX500mm, 1mX1m, 485mmX485mm(interlock)

Interlock: With/Without

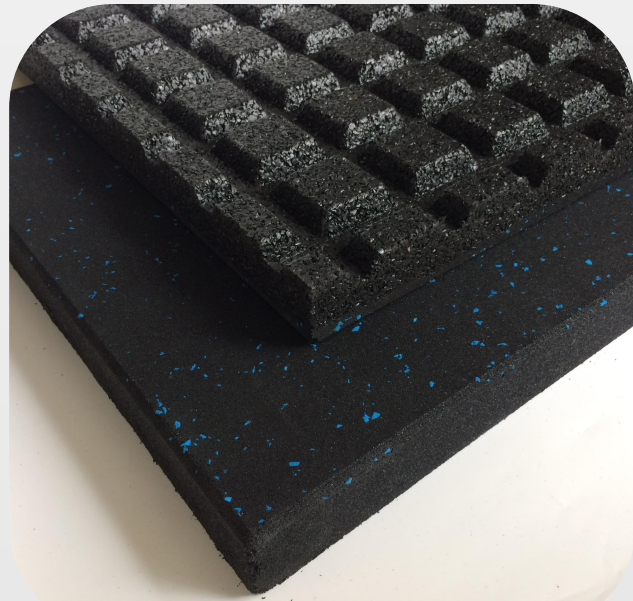
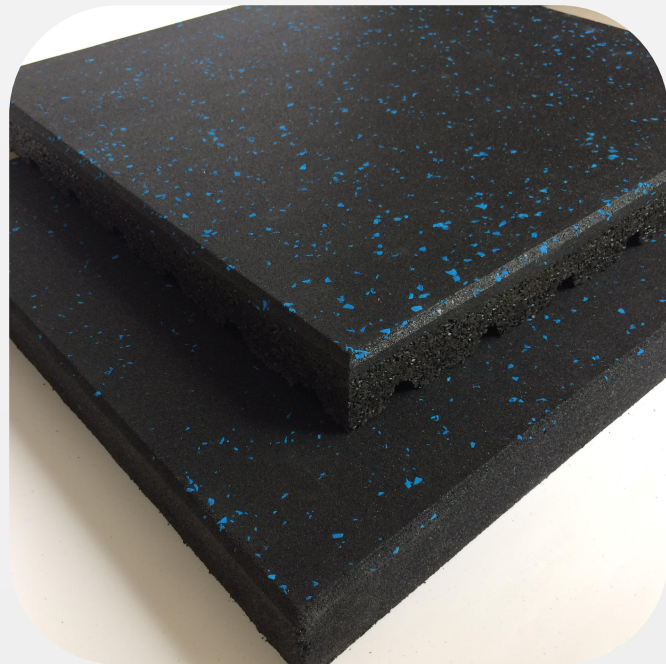
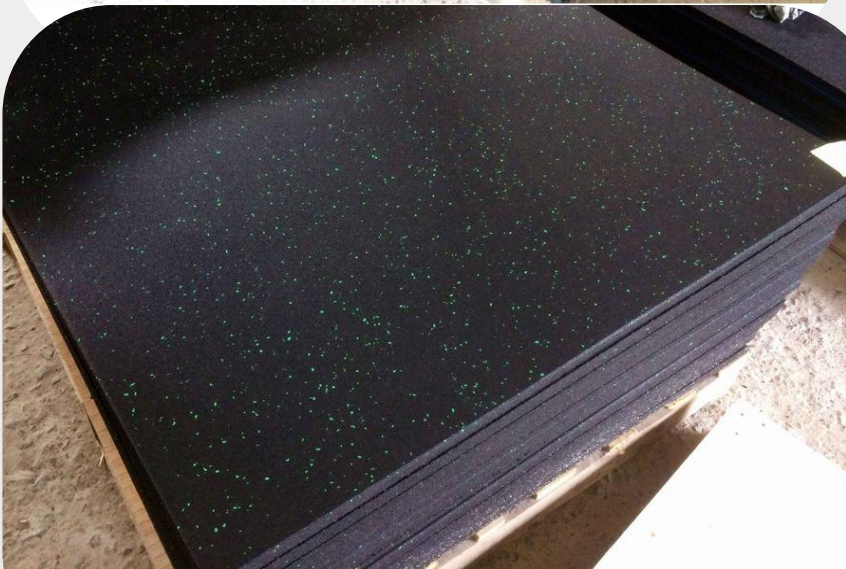
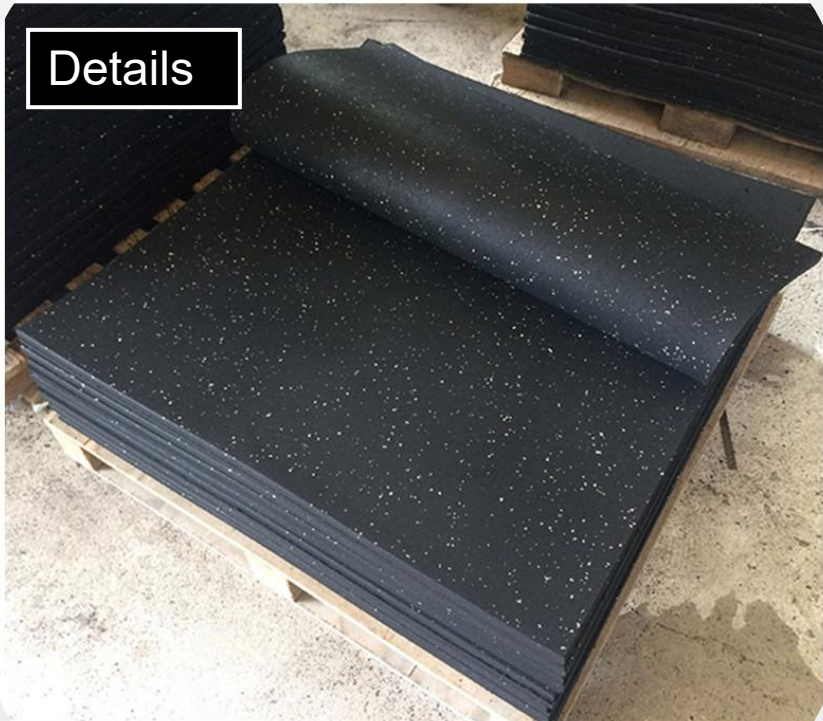
Thickness: 15mm-50mm, 15-20mm(with interlock)

Colour: Blue: Green, Red, Grey, Black, Yellow



INDIOR FLOOR

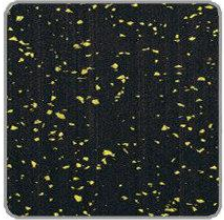
Details



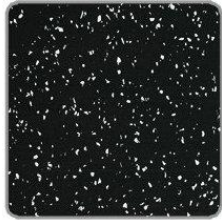
INDIOR FLOOR

Colour Display

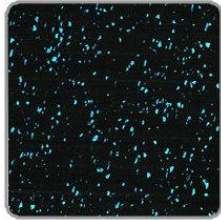
COLOR DISPLAY



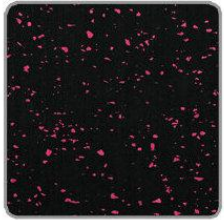
Black+yellow



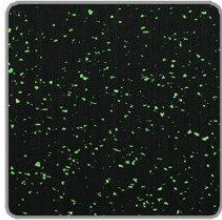
Black+white



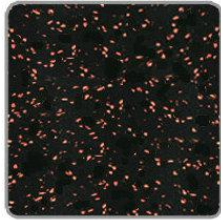
Black+Blue



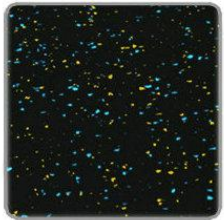
Black+Red



Black+Green



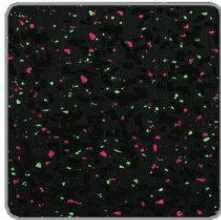
Black+orange



Black+blue+yellow



Black+Red+white



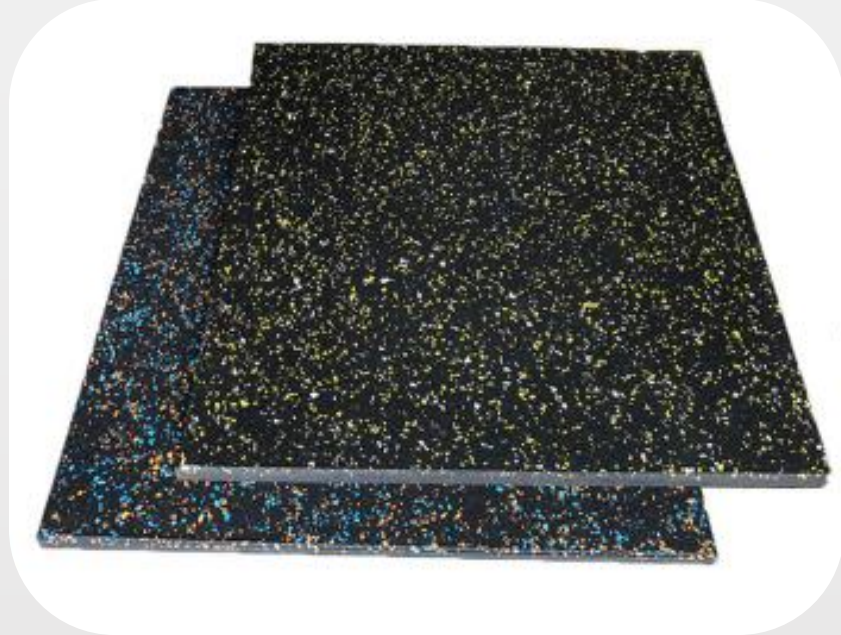
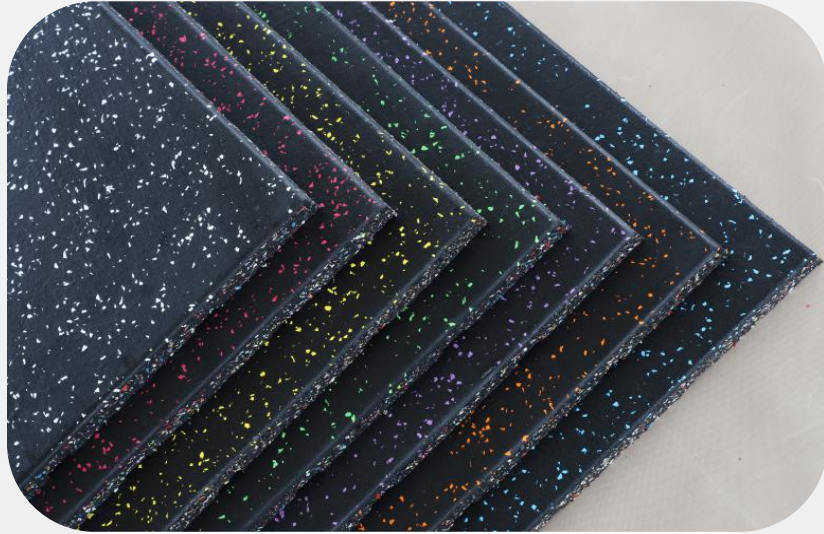
Black+red+green

Rubber tile used in home and protect your wood floor



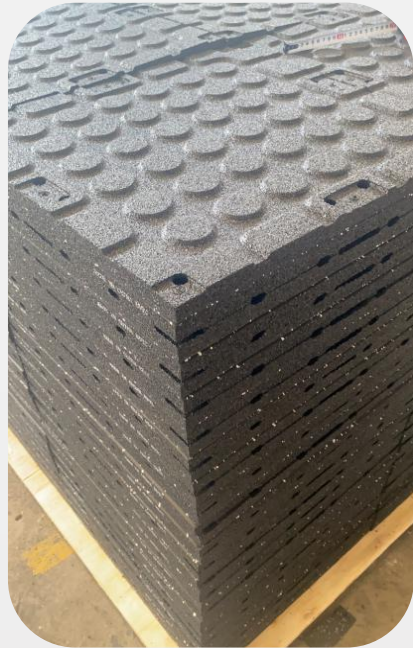
INDIOR FLOOR

4. Rubber Tile Compound Colourful EPDM Layer



INDIOR FLOOR

Details



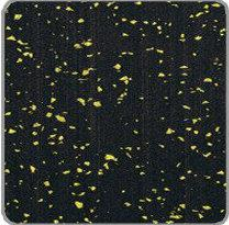

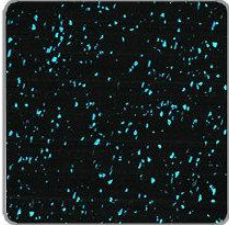
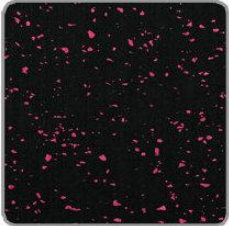
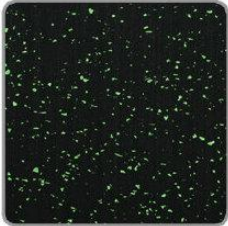
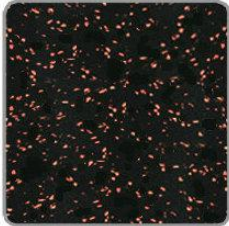
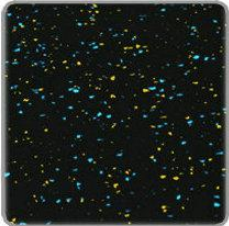

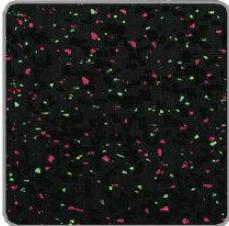
Material: EPDM+Recycling tyres rubber
Size: 500mmX500mm, 1mX1m, 485mmX485mm(interlock)
Interlock: With/Without
Thickness: 15mm-50mm, 15-20mm(with interlock)
Colour: Blue: Green, Red, Grey, Black, Yellow

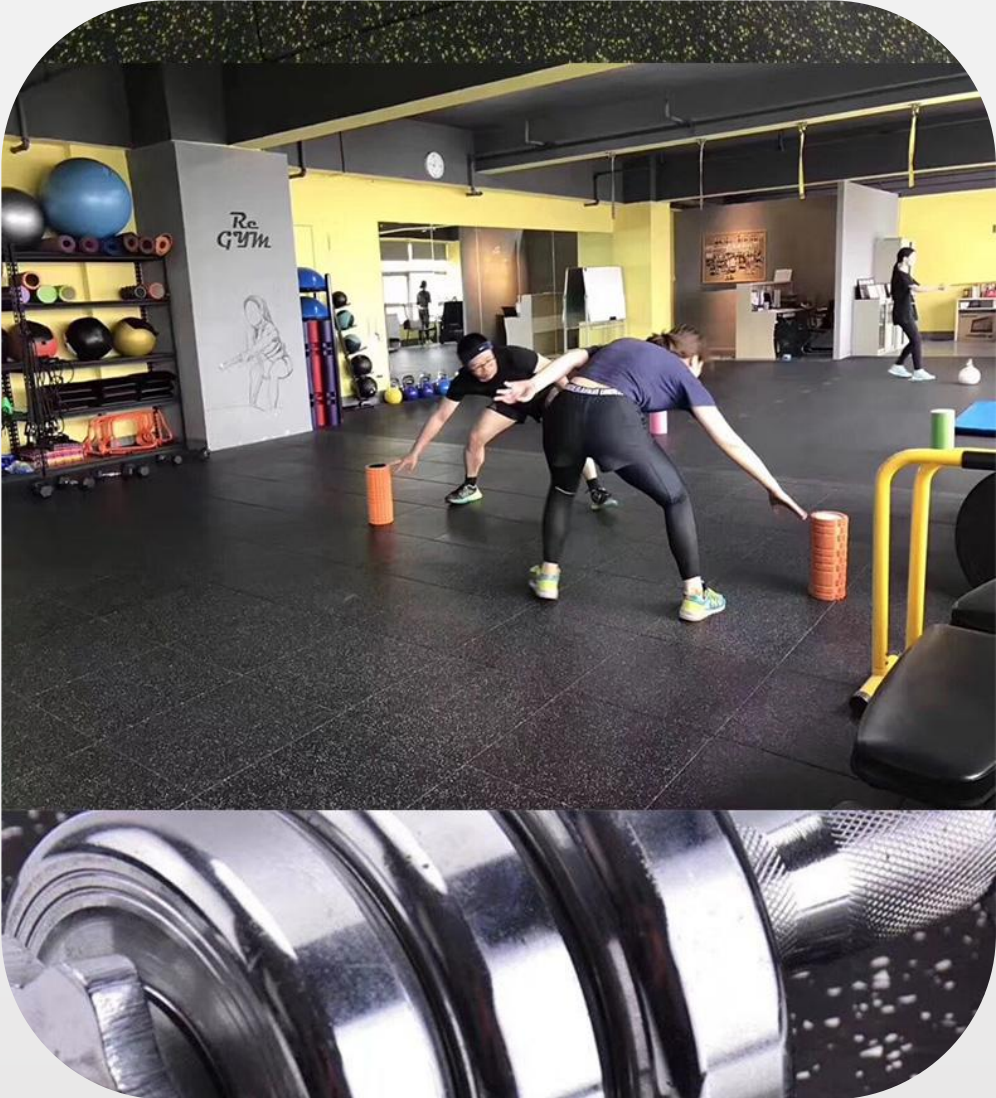
INDIOR FLOOR

Colour Display

Rubber tile used in gym aerobics & heavy equipment area

COLOR DISPLAY

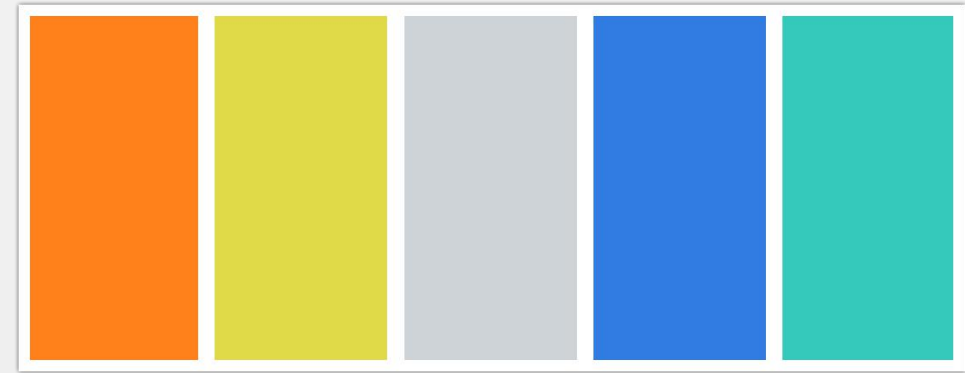
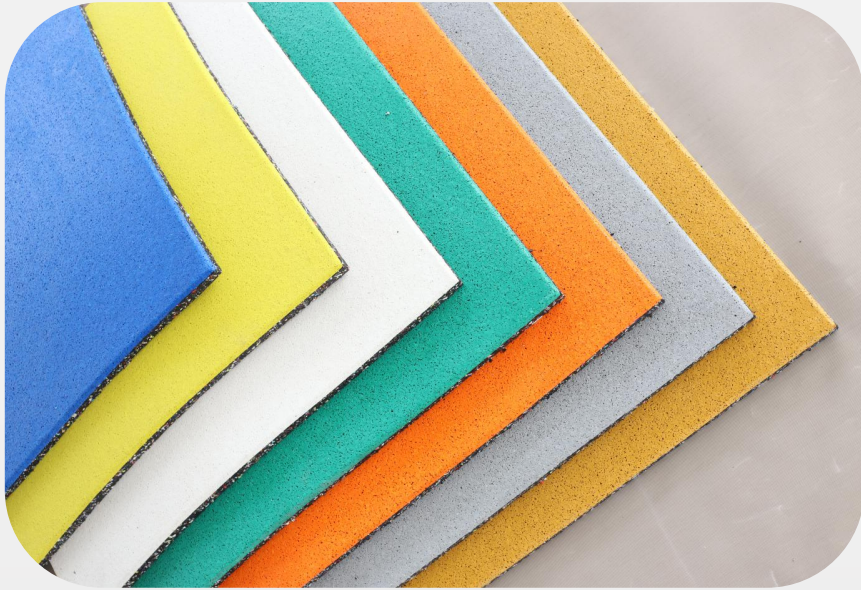
 <i>Black+yellow</i>	 Black+white	 Black+Blue
 Black+Red	 Black+Green	 Black+orange
 Black+blue+yellow	 Black+Red+white	 Black+red+green



INDIOR FLOOR

5.Rubber Tile--100% EPDM +sparkle Base

Colour Display



INDIOR FLOOR

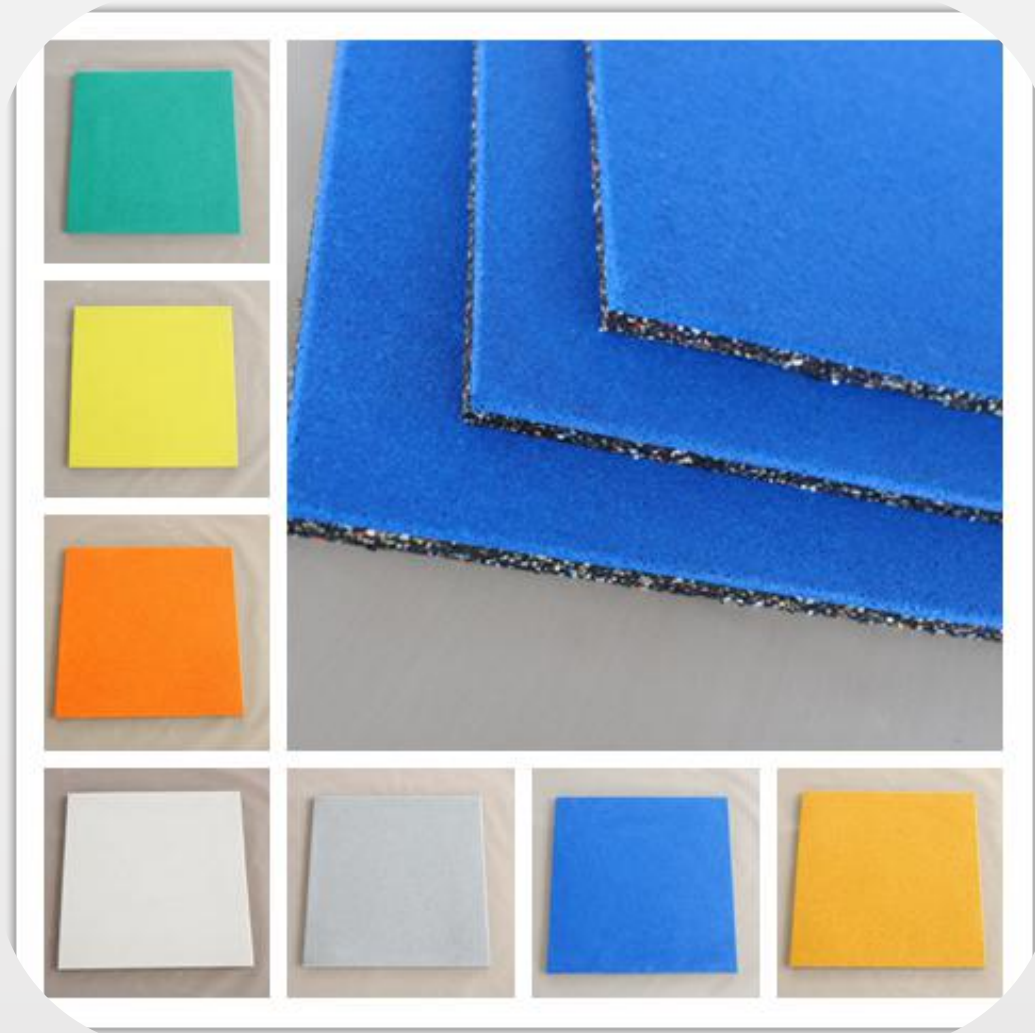
Material: 100% EPDM + Colourful Rubber Base

Size: 500mmX500mm

Thickness: 15mm-50mm,

Colour: Blue Green, Red, Grey, Black, Yellow etc

Details



INDIOR FLOOR

6. Other types

Brightly Surface Rubber tiles

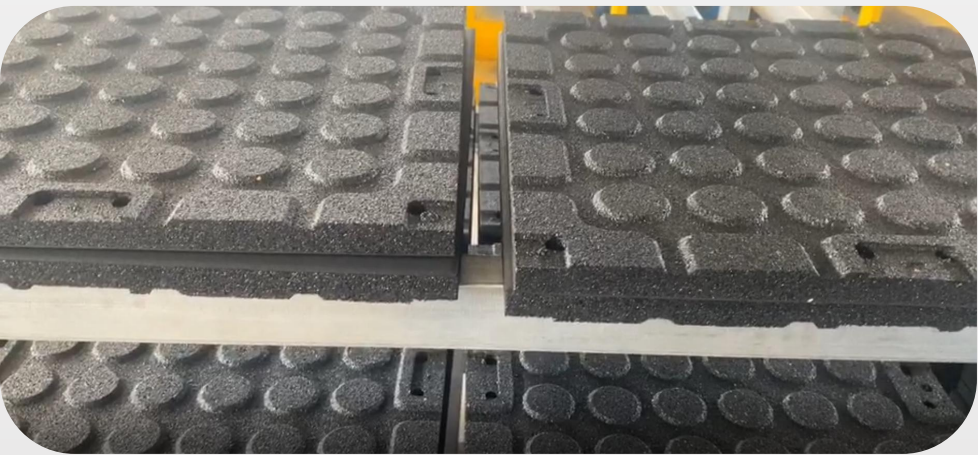
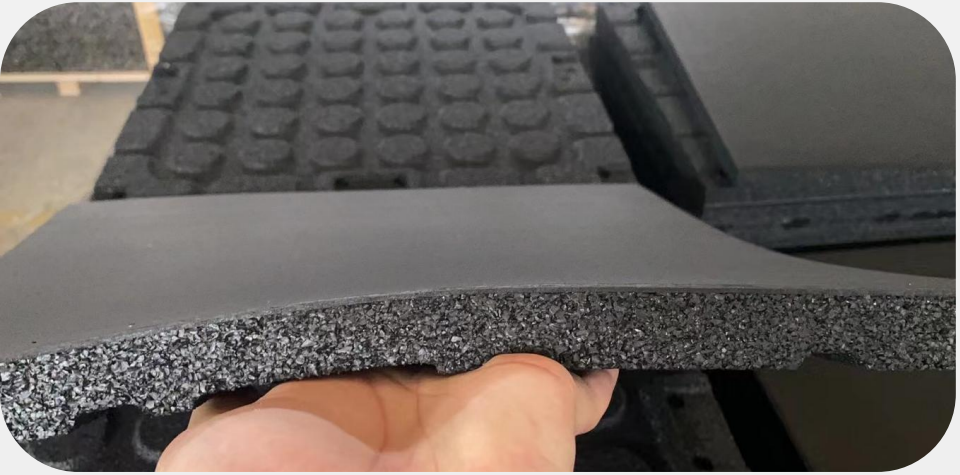


100% EPDM Rubber Tiles



INDIOR FLOOR

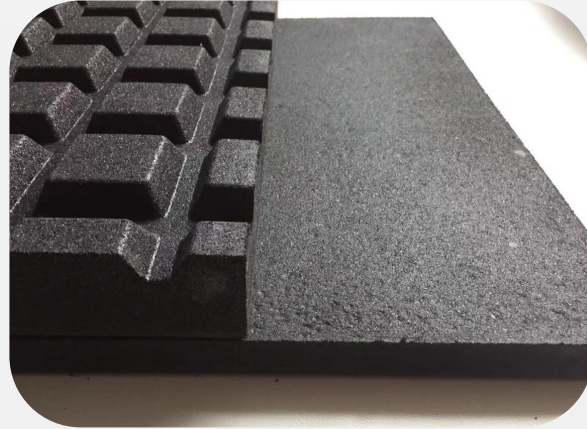
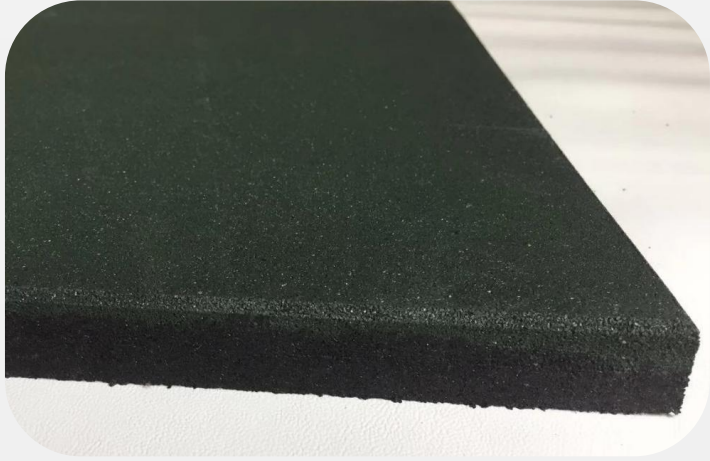
Shooting High Density Hard Tiles



Material:High density SBR+EPDM
Size:50cmx50cm or 1mx1m,
Thickness: 15mm-50mm,
Colour: Black or Black+Blue
Green, Red, Grey, Black, Yellow
etc



Shooting High Density Hard Tiles-all thinner fine granular



Material:High density SBR Rubber
Size:50cmx50cm or 1mx1m,
Thickness: 15mm-50mm,
Colour: Black/Red/Green/Blue etc

Shooting High Density Hard Rubber Wire Tiles



Material: SBR Rubber
Thickness: 15mm-50mm,
Colour: red black etc

Shooting Case

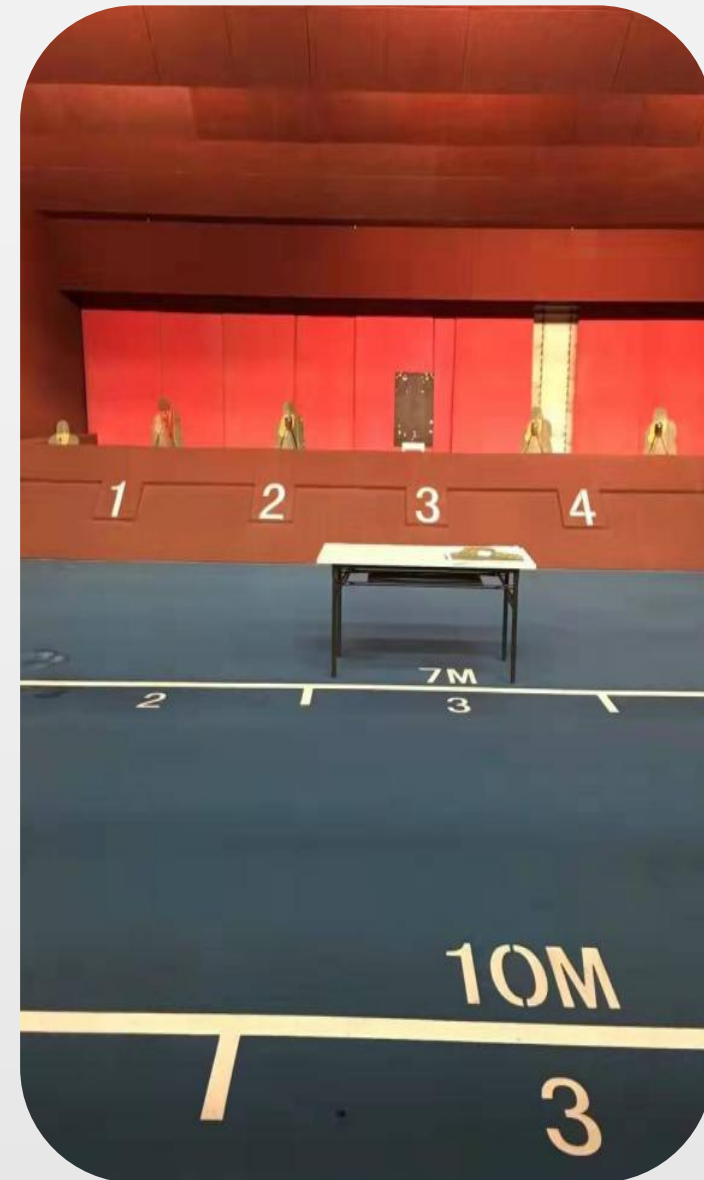
Shooting Test (50cmx50cmx15mm)



(Front)



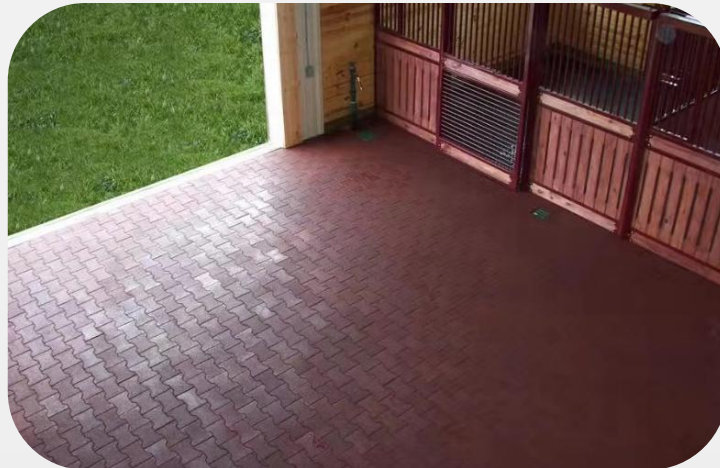
(Backside)



Shooting Case



Bone Rubber Tiles

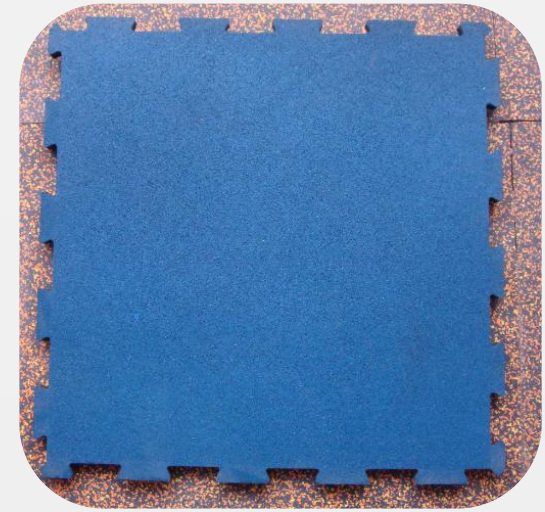
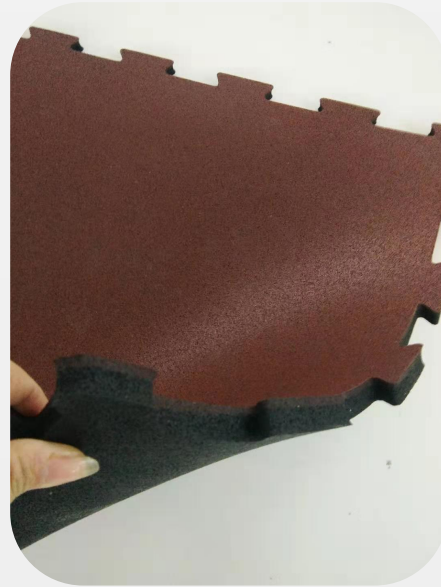


Material:SBR+EPDM
Size:200mmx160mm,
Thickness: 15mm-50mm,
Colour: Blue Green, Red, Grey,
Black, Yellow etc



Interlocking Rubber tiles

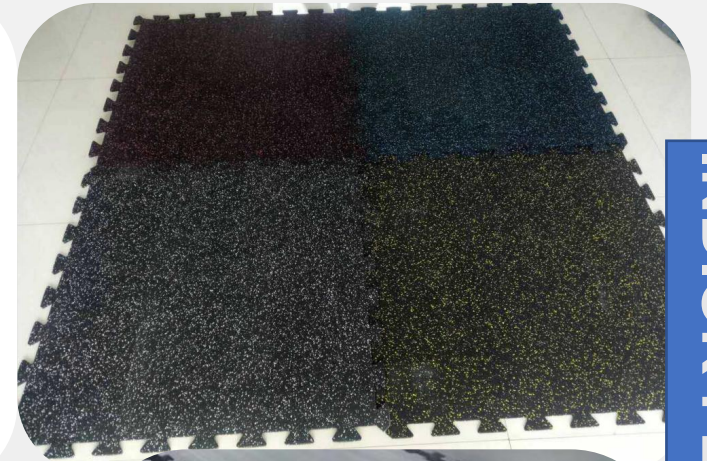
Material: Recycled tyre + EPDM
Size: 485mmX485mm,
975mmX975mm,
900mmX900mm, 1mX1m
Thickness: 15mm/20mm,
Colour: Blue Green, Red, Grey,
Black, Yellow etc



INDIOR FLOOR

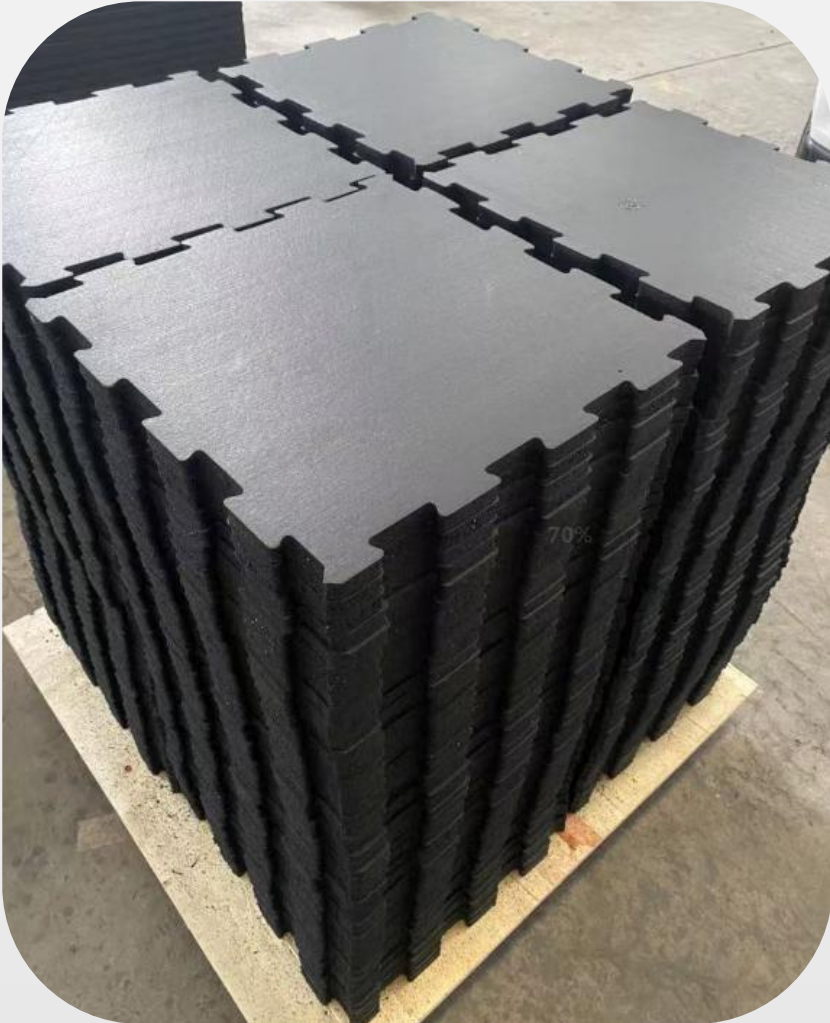
Interlocking Rubber tiles-rubber roll cut interlock

Material:
SBR+EPDM
Size: 1m x 1m,
Thickness:
6-10mm ,
Colour:
Black or
Black+Blue
Green, Red,
Grey, Black,
Yellow etc



INDIOR FLOOR

Composite Interlocking Rubber tiles



Material:
SBR + EPDM Size:
485mmX485mm,
975mmX975mm,
Thickness:
15mm/20mm,
Colour: Black or
Black+Blue Green,
Red, Grey, Black,
Yellow etc



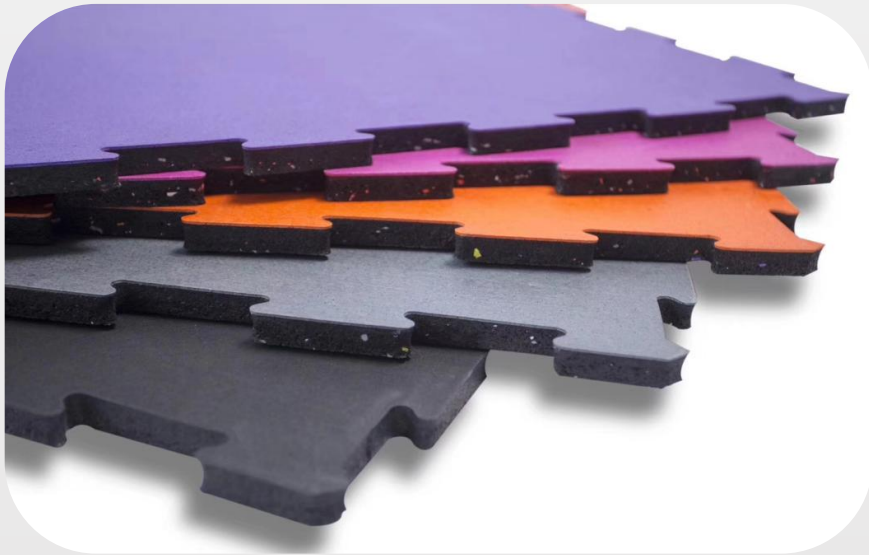
EPDM Interlocking Rubber tiles

Material:EPDM

Size:485mmX485mm, 975mmX975mm,
90cmx90cm etc

Thickness: 6-10mm,15mm/20mm,

Colour: EPDM colorful



Personal trainer training area

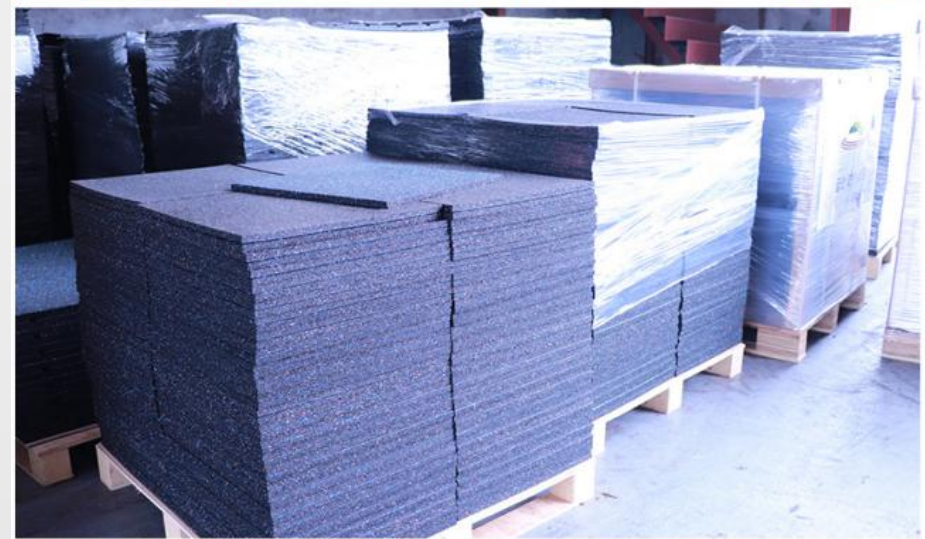


INDIOR FLOOR

Features of Rubber Floorings

1. It is anti-pressure, anti-shock, has big attrition coefficient and elasticity and is shockproof and anti-slipping, thus enjoying strong protection property;
2. It has good weather and temperature resistance and good anti-infrared ray property. It is in normal use for different places in the range of -40°C to 100°C ;
3. It has good properties of waterproof and hydrophobic and has no seepage on the surface and is easy for cleaning and maintenance;
4. It has the properties of heat insulation, sound insulation, anti-static, fire preventing, moisture proof, anti-shock, permeation and big safety coefficient;
5. It is free of toxicity, stimulation and pollution and is shock proof and does not breed microbes;
6. It is varied in specifications and rich in colors and has no reflection and good decoration surface. You may match varied designs as you wish;
7. It is easy for application. You may use it directly or with adhesive agent.

Rubber Tiles Production



INDIOR FLOOR

Installation

Step 1: Prepare the rubber floor, glue etc



Step 2: scratch the glue



Step 3:cut the floor in the corner



Step4 Pave the rubber floor



Step 5 Measure the size and cut the floor to match the ground



PVC Floor Used in Gym



Fitness Areas

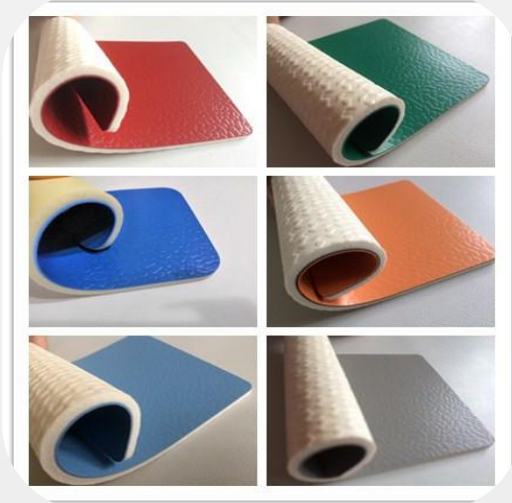
Product

Gym PVC Floor



INDIOR FLOOR

Gemstone PVC Floor



Material: Virgin PVC

Size: 1.8mX15m/20m or length as you request

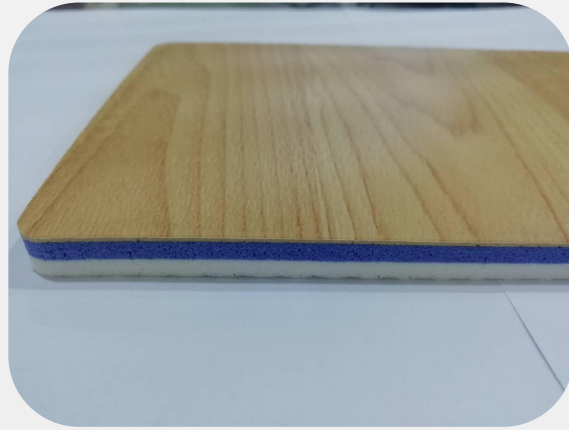
Thickness: 3.5mm, 4.5mm, 6.0mm 8.0mm

Colour: Blue: Green, Red, Grey, Blue, Orange



INDIOR FLOOR

Wood Pattern PVC Floor



Material: Virgin PVC

Size: 1.8mX15m/20m or length as you request

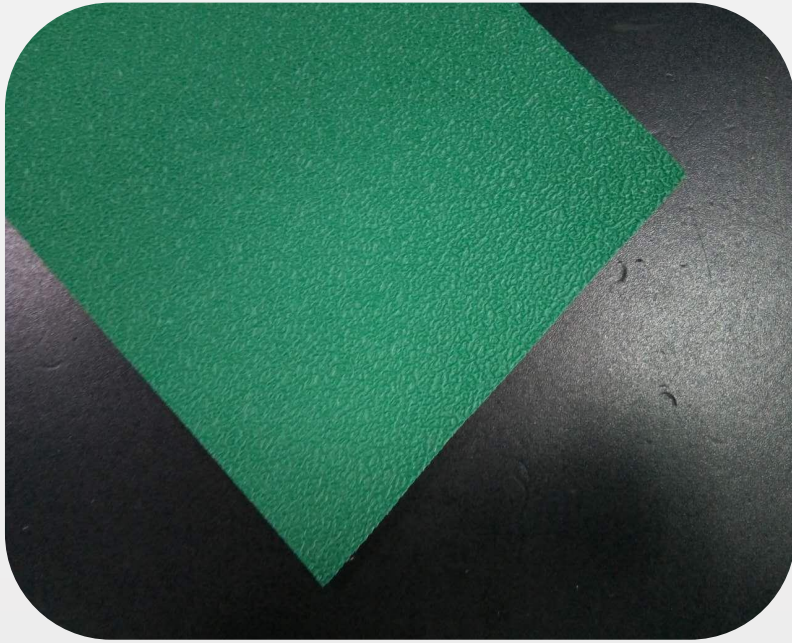
Thickness: 3.5mm, 4.5mm, 6.0mm 8.0mm

Colour: Blue: Light maple, Dark Oak, Blue maple, etc



INDIOR FLOOR

Sand Pattern PVC Floor



Material: Virgin PVC

Size: 1.8mX15m/20m or length as you request

Thickness: 3.5mm, 4.5mm, 6.0mm 8.0mm

Colour: Blue: Green, Red, Blue, Grey etc

Litchi Pattern PVC Floor



Other Pattern PVC Floor



INDIOR FLOOR

Material: Virgin PVC

Size: 1.8mX15m/20m or length as you request

Thickness: 4.5mm, 4.7mm, 6.0mm

Colour: Blue, Green, Red, Blue, Grey etc

PVC Floor Specification

Test Item		Technique Requirements	Test Result	Conclusion
Appearance Quality		Uniform Hues,no remarkable colour difference,no crack nor delamination etc	√	Qualified
Rigidity(Shore A),degree		60~75	67	Qualified
Tensile Strength(MPa)		≥1.8	2.7	Qualified
Elongation Rate at Break(%)		≥180	209	Qualified
Flame Retardent(Grade)		1	1	Qualified
Wear Resistance(mm)		≤10	6	Qualified
Friction Coefficient		0.50~0.70	0.67	Qualified
Vinyl Chloride Monomer(mg/kg)		≤5.0	0.22	Qualified
Soluble heavy metals(mg/m ²)	Cadmium	≤20	0.0034	Qualified
	Lead	≤20	7.5	Qualified
Volatile Matter(g/m ²)		≤75	22	Qualified

MORE PRODUCTS



INDIOR FLOOR